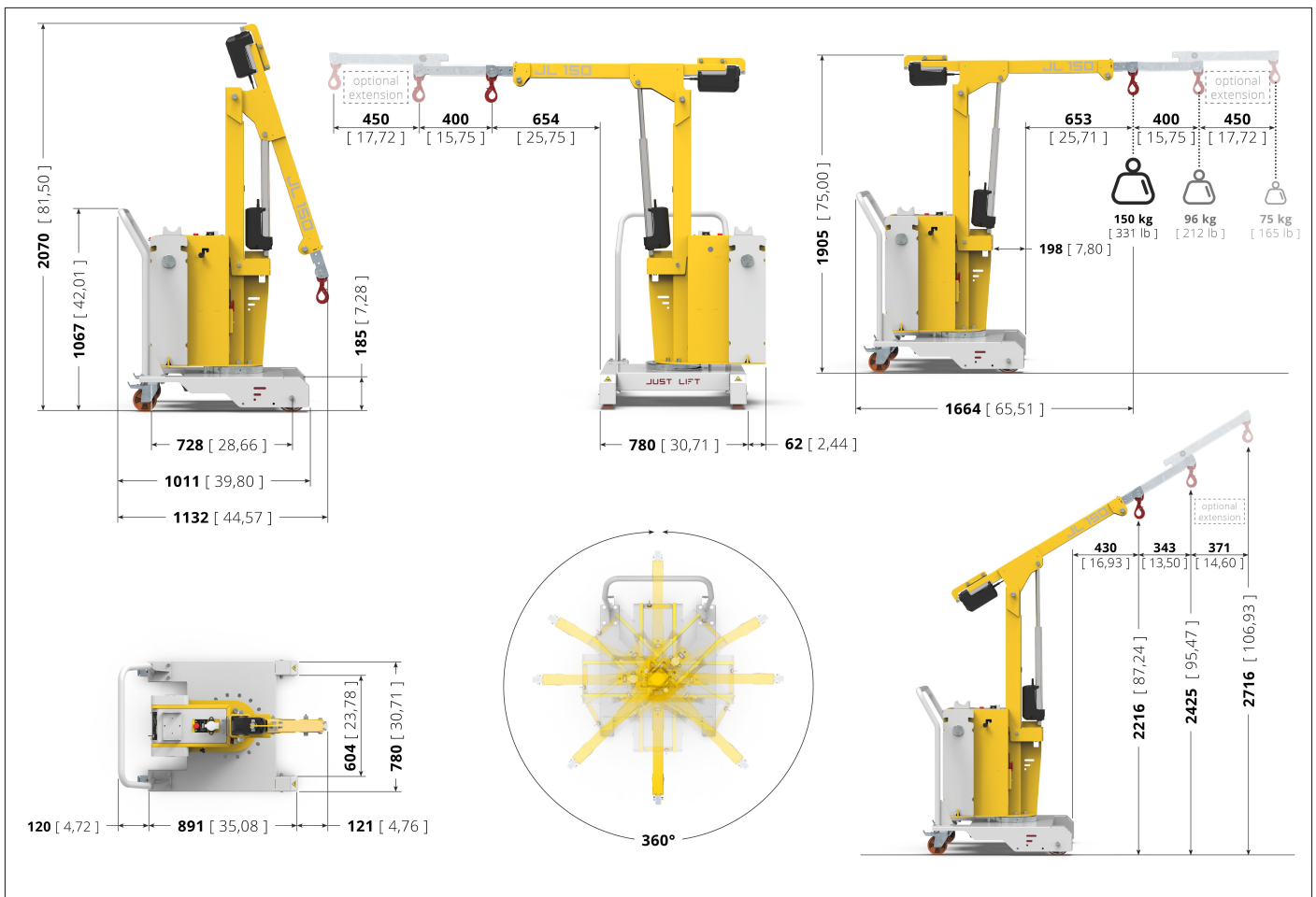


JUST LIFT



JL110.720-5===

Technical drawing



JUST LIFT

TABLE:

JL110.720

JL150

Unit: mm [inch]

Technical data

1. Characteristics

Réf.no.	Description	U.M.	Valeur
1.01	Model number		JL110.720-5===
1.02	Model name		JL 150
1.03	Manufacturer		Zallys
1.04	Operator		Pedestrian
1.05	Power unit		Electric
1.07	CE certification		
1.08	Plant tension	V	24
1.09	Nominal power	kW	1,00

1. Frame characteristics

Réf.no.	Description	U.M.	Valeur
1.80	Frame made of		Steel
1.83	Frame treatment		Polyester powder coating

2. Safety data

Réf.no.	Description	U.M.	Valeur
2.06	Power supply disconnection device / Emergency stop		Detachable power connector
2.10	Acoustic signaling		Beeper
2.20	Handarm vibration	m/s ²	<2,5
2.22	Noise level at operator's ears	dB	<70

3. Performances

Réf.no.	Description	U.M.	Valeur
3.15	Max. lifting capacity	kg	150
3.28	Max.slope with load *	%	
3.31	N ° Operators		1
3.60	Arm lifting speed	mm/s	12,70
3.61	Arm descent speed	mm/s	12,70
3.62	Arm extension speed	mm/s	12,70
3.63	Arm return speed	mm/s	12,70

3. Technical data of electric tilting system

Réf.no.	Description	U.M.	Valeur
3.90	System voltage	V	24

4. Drive controls

Réf.no.	Description	U.M.	Valeur
4.01	Type of control		Manual push
4.05	Lifting system operated by		Wired pushbutton

4. Control panel

Réf.no.	Description	U.M.	Valeur
4.50	Battery level indication		Control dashboard
4.51	Low battery level indicator		Control dashboard

5. Standard battery specifications

Réf.no.	Description	U.M.	Valeur
5.01	Batteries		2
5.02	Batteries type		Traction AGM batteries
5.03	Battery voltage	V	12
5.04	Nominal Capacity 5 h	Ah	72
5.05	Nominal Capacity 20 h	Ah	96
5.06	Weight of each battery	kg	21

6. Available chargers

Réf.no.	Description	U.M.	Valeur
6.40	Standard voltage	V	220/240
6.41	Multitension	V	110/240
6.42	Plug		In use in the country of destination

6. Technical data of standard charger

Réf.no.	Description	U.M.	Valeur
6.01	Battery charger		External - high frequency
6.02.1	Input voltage max	V	230

Réf.no.	Description	U.M.	Valeur
6.03	Input Frequency	Hz	50-60
6.04	battery charger voltage type		Monophase
6.05	Battery charger capacity	Ah	8
6.06	Power consumption during complete charge cycle	kWh	2
6.07	Operating temperature	°C	-20 / +40
6.08	Operation display		Led
6.09	Input fuse	A	5
6.10	Cooling system		Ventilation cooling
6.11	IP degrees of protection		IP20
6.12.1	Width	mm	95
6.12.2	Length	mm	185
6.12.3	Height	mm	55

8. Generic technical data

Réf.no.	Description	U.M.	Valeur
8.07	Service and emergency brake		Mechanical
8.23	Structure		In steel
8.24	Surface treatment		Polyester powder coating

9. Weight

Réf.no.	Description	U.M.	Valeur
9.01	Weight without batteries	kg	281
9.09	Weight incl. 72/96A AGM batteries	kg	336

10. Dimensions

Réf.no.	Description	U.M.	Valeur
10.01.1	Length max	mm	2.100
10.01.2	Length min	mm	1.132
10.02	Width	mm	780
10.05.1	Height max	mm	2.736
10.05.2	Height min	mm	2.070
10.08	Loading platform height	mm	500
10.11.1	lifting height max	mm	2.716
10.14	Wheelbase	mm	728
10.15	Turning circle	m	1,05
10.50	**For further details please click on technical draws		

11. Standard wheels

Réf.no.	Description	U.M.	Valeur
11.03	Pivoting wheels no.		2
11.04	Castor wheels		2
11.05	Tyres		Polyurethane (oil resistant)
11.05.1	Tyre for fixed wheels		Polyurethane (oil resistant)
11.16	Pivoting wheels diameter	mm	125
11.18	Castor wheels diameter	mm	160